



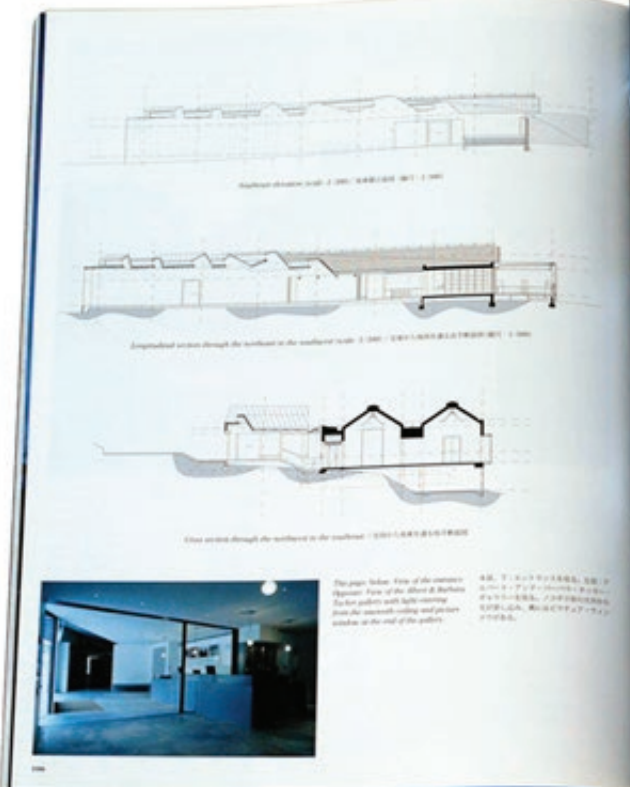
O'Connor + Houle Architecture
 Studio Architecture
 Halifax, Canada, founded 2000
 400-440-1111 • 7-0777-1111
 400-440-1111
 400-440-1111, 70-0 000



Architecture and Interiors

Interior • Living of the Land

O'Connor + Houle Architecture
 Studio Architecture
 Halifax, Canada, founded 2000



Section through the building to the southeast (1) 1:100

Expedient section through the building to the southeast (2) 1:100

View across through the building to the southeast (3) 1:100



The open interior view of the interior
 shows the view of the building
 to the public with light entering
 from the interior with ceiling and glass
 panels at the end of the gallery

SEE THE
 ARCHITECTURE
 OF THE
 BUILDING
 FROM THE
 INTERIOR
 WITH THE
 LIGHT
 ENTERING
 FROM THE
 INTERIOR
 WITH THE
 CEILING
 AND GLASS
 PANELS
 AT THE
 END OF
 THE
 GALLERY



The redevelopment of the British Museum of Modern Art is principally focused on the provision of two new gallery spaces. The Albert and Barbara Tucker Gallery and associated study Centre and the Andrew Lloyd Webber Gallery project space. It also includes new staff offices, store, shop, cafe, as well as a bank of home facilities, including increased collection storage and a new workshop.

The principal space forming part of the works in the Albert and Barbara Tucker Gallery, which has been designed with three collections of Albert Tucker's works in mind.

The gallery is long and thin. This provides a somewhat intimate space within which to view the works of Tucker. Several notable works are on display, including many important works.

The space is slightly tilted to plan, so that the entire gallery is not fully exposed upon entering. It is tilted gently so that visitors can see through the space and is punctuated by a large floor to ceiling picture window at the end of the gallery, which enables one to appreciate the top of the Albert Tucker Gallery. This is designed to help create narrative opportunities for the visitor, as well as acting as an endearing gesture of the new extension towards the Albert Tucker Gallery.

The space is tall and is lit by a series of skylights which are a re-working of the vertically oriented skylights of the original building. The skylights act as a kind of screen of the natural light from the outside. By day they have a plain silver quality, by night they are lanterns.

The Albert and Barbara Tucker Gallery is articulated as a separate space from the existing galleries and is clad in stainless steel. It is separated from the existing galleries by a new ramp which acts as a space element.

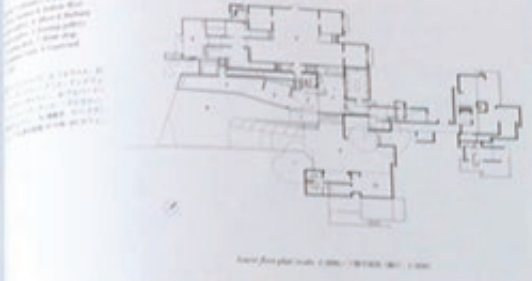
The formal arrangement follows the 'front and back' model. The Albert and Barbara Tucker Gallery and the new private concert studio share the same area.

Part of the strategy for adding new areas to these sides of the central facade was to provide these with an open shaft space starting at the new entrance and penetrating the entire building through to the garden on the other side of the building, which leads to the street. This 'void' needs to organize the multitude of spaces in the sense of the street and act as a promenade element, connecting one of the building's complexly rich landscape context and history.

The halls also have a programmatic function. They act as acoustic and visual buffer and protect the site from the traffic of busy adjoining Bridge Street. The halls are punctuated by an important new sculpture commissioned by British sculptor Reg King and by subtle lighting at night emanating from a number of large glass balls.



Karlin and Dale
 Principal Architect
 Karlin and Dale Architects
 100, 102, 104, 106, 108, 110, 112, 114, 116, 118, 120, 122, 124, 126, 128, 130, 132, 134, 136, 138, 140, 142, 144, 146, 148, 150, 152, 154, 156, 158, 160, 162, 164, 166, 168, 170, 172, 174, 176, 178, 180, 182, 184, 186, 188, 190, 192, 194, 196, 198, 200, 202, 204, 206, 208, 210, 212, 214, 216, 218, 220, 222, 224, 226, 228, 230, 232, 234, 236, 238, 240, 242, 244, 246, 248, 250, 252, 254, 256, 258, 260, 262, 264, 266, 268, 270, 272, 274, 276, 278, 280, 282, 284, 286, 288, 290, 292, 294, 296, 298, 300, 302, 304, 306, 308, 310, 312, 314, 316, 318, 320, 322, 324, 326, 328, 330, 332, 334, 336, 338, 340, 342, 344, 346, 348, 350, 352, 354, 356, 358, 360, 362, 364, 366, 368, 370, 372, 374, 376, 378, 380, 382, 384, 386, 388, 390, 392, 394, 396, 398, 400, 402, 404, 406, 408, 410, 412, 414, 416, 418, 420, 422, 424, 426, 428, 430, 432, 434, 436, 438, 440, 442, 444, 446, 448, 450, 452, 454, 456, 458, 460, 462, 464, 466, 468, 470, 472, 474, 476, 478, 480, 482, 484, 486, 488, 490, 492, 494, 496, 498, 500, 502, 504, 506, 508, 510, 512, 514, 516, 518, 520, 522, 524, 526, 528, 530, 532, 534, 536, 538, 540, 542, 544, 546, 548, 550, 552, 554, 556, 558, 560, 562, 564, 566, 568, 570, 572, 574, 576, 578, 580, 582, 584, 586, 588, 590, 592, 594, 596, 598, 600, 602, 604, 606, 608, 610, 612, 614, 616, 618, 620, 622, 624, 626, 628, 630, 632, 634, 636, 638, 640, 642, 644, 646, 648, 650, 652, 654, 656, 658, 660, 662, 664, 666, 668, 670, 672, 674, 676, 678, 680, 682, 684, 686, 688, 690, 692, 694, 696, 698, 700, 702, 704, 706, 708, 710, 712, 714, 716, 718, 720, 722, 724, 726, 728, 730, 732, 734, 736, 738, 740, 742, 744, 746, 748, 750, 752, 754, 756, 758, 760, 762, 764, 766, 768, 770, 772, 774, 776, 778, 780, 782, 784, 786, 788, 790, 792, 794, 796, 798, 800, 802, 804, 806, 808, 810, 812, 814, 816, 818, 820, 822, 824, 826, 828, 830, 832, 834, 836, 838, 840, 842, 844, 846, 848, 850, 852, 854, 856, 858, 860, 862, 864, 866, 868, 870, 872, 874, 876, 878, 880, 882, 884, 886, 888, 890, 892, 894, 896, 898, 900, 902, 904, 906, 908, 910, 912, 914, 916, 918, 920, 922, 924, 926, 928, 930, 932, 934, 936, 938, 940, 942, 944, 946, 948, 950, 952, 954, 956, 958, 960, 962, 964, 966, 968, 970, 972, 974, 976, 978, 980, 982, 984, 986, 988, 990, 992, 994, 996, 998, 1000.



Albert and Barbara Tucker Gallery extension, 2000-2002, Karlin and Dale Architects. Photo: © Karlin and Dale Architects.